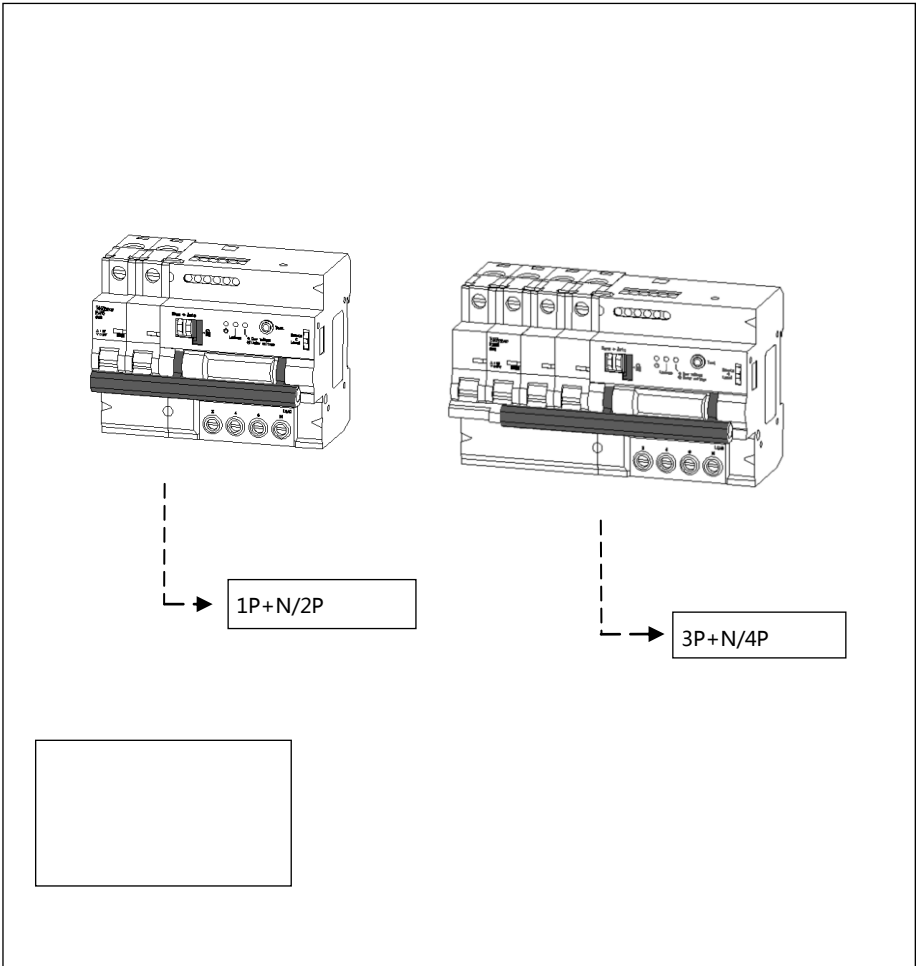
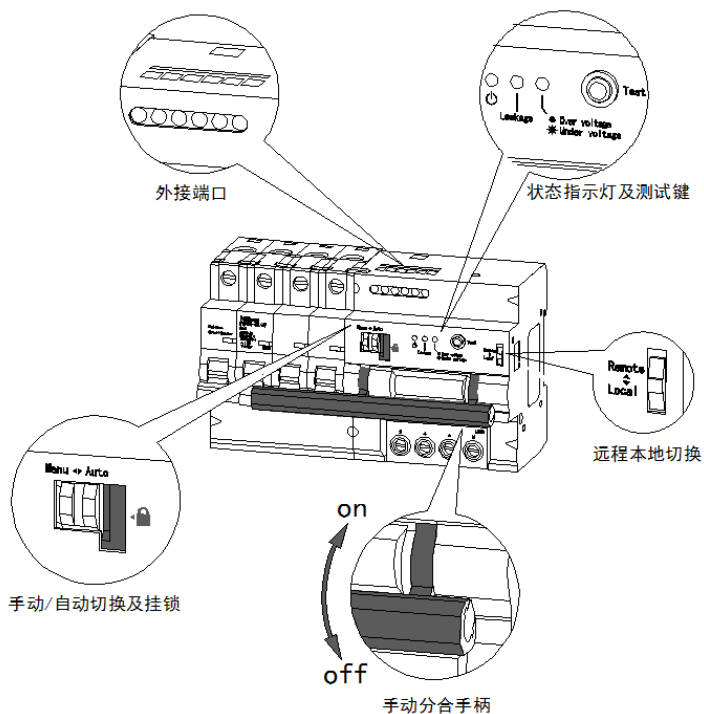


## FAR5 自动重合闸保护器

FAR5

JGJ242-2011





C65

2P/4P/1P+N/3P+N

**FAR5-63**

选型

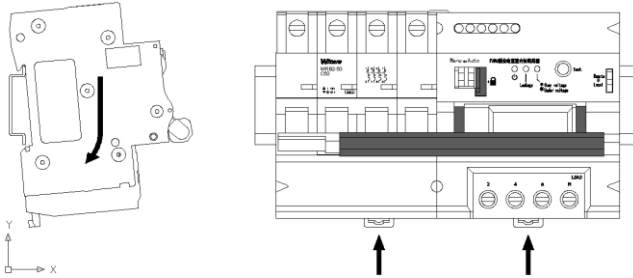
F	AR	5	=	63	L	4	3	//	C	63A	4P
企业代号	产品大类	产品设计 序号		壳架电流	功能类别	机构极数	增选功能		保护特性	额定电流	断路器极数
苏州未来电 器有限公司	自动重合闸 保护器				漏电保护		无 (可省略)		型		
					M: 漏电及过 欠压保护		故障报警		型		
							远程控制		型		
							通讯				...

\*

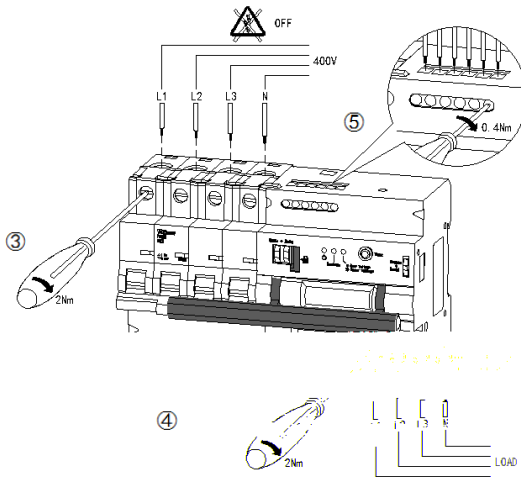


<p>Leakage    Over voltage Under voltage</p>				
			30s	
			30s	
			30s 15min 15min	Test    3s





35mm

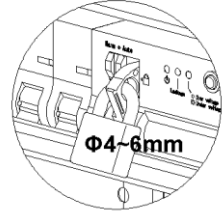


- |    |      |     |
|----|------|-----|
| 1. | Manu | 2   |
| 2. |      |     |
| 3. | Auto |     |
| 4. | Test | 30s |
| 5. |      |     |

Auto

Test 3s

挂锁



Test 3s,

Test

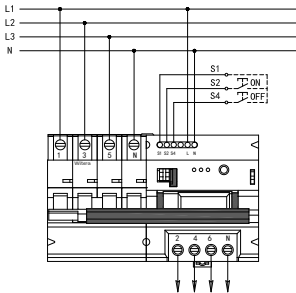
Leakage

30s

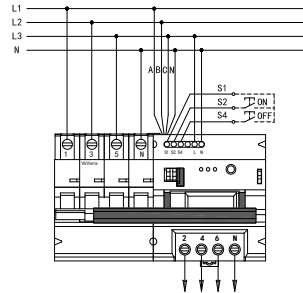
Manu

4P

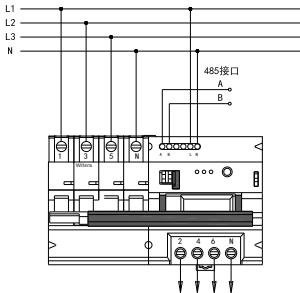
FAR5-63L43



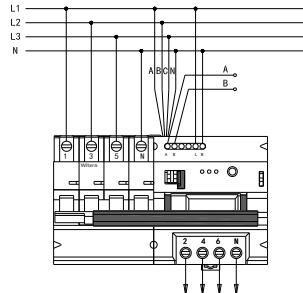
FAR5-63M43



FAR5-63L44

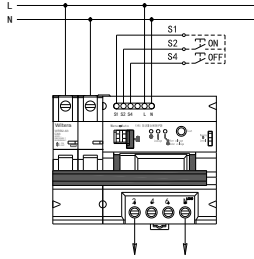


FAR5-63M44

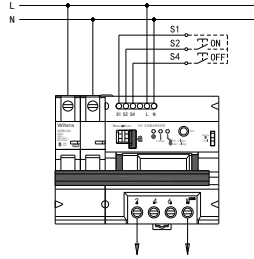


2P

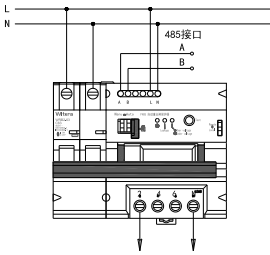
FAR5-63L43



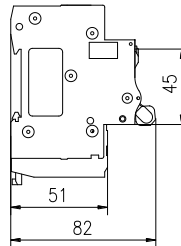
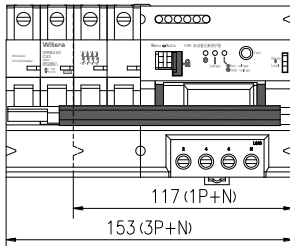
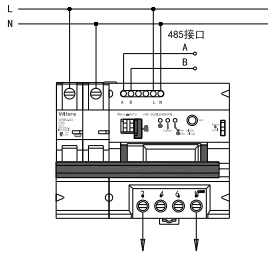
FAR5-63L43



FAR5-63L44



FAR5-63L44



12



86-512-65412366



86-512-65412420

@ www.szfuture.com